

DEVKUND

WATERFALL

ONE DAY TREK



8800-144-436

SHORT ITINERARY



Pickup from
Pune /Mumbai



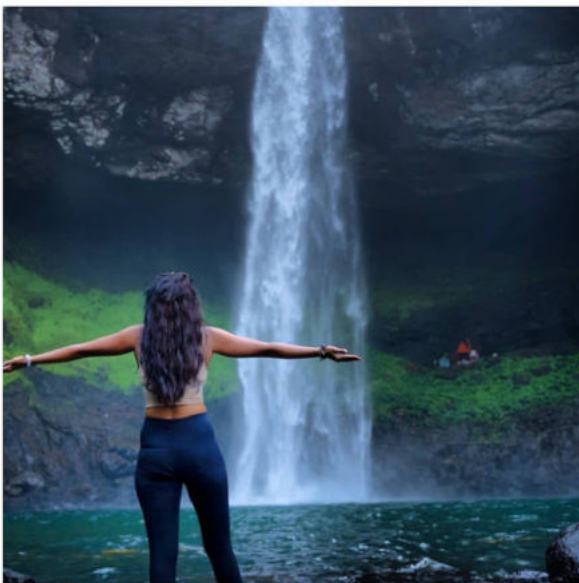
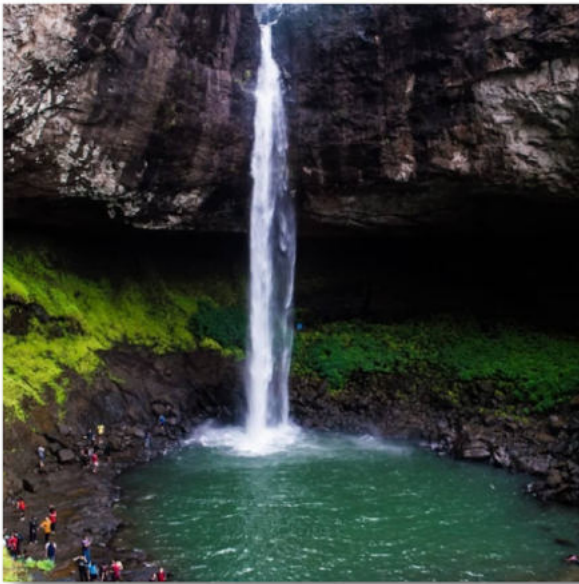
We will reach
Patnus Village
(Saturday)



Trekking and Exploring



Back to Pune/Mumbai



ABOUT DEVKUND WATERFALL

- Trek with your friends to Devkund, one of India's most beautiful waterfalls, which is 2,700 feet high.
- Witness the breathtaking convergence of three waterfalls, known as the Kundalika River's source, and stunning mountains and valleys.
- Explore some famous and beautiful spots like the amazing Bhira dam & Tamhini Ghat on your way.
- Avail hassle free shared transfers, to & from Mumbai and Pune with pick-up from multiple locations



TREKKERS OF MAHARASHTRA™

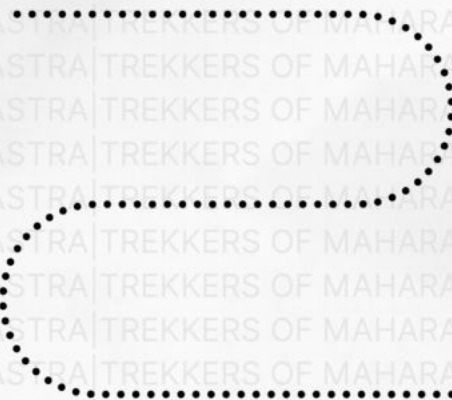
ITINERARY

Day 0



PICK UP FROM PUNE/MUMBAI

10:30 PM Reporting | 11:30 PM Journey Starts



FOR ANY QUERIES & BOOKINGS :  +91 8800-144-436



Day 1



04:00 AM Reach Base Village

06:00 AM After quick breakfast we start trek towards devkund

08:00 AM Reach Devkund Waterfall

- Explore Devkund Waterfall
- Get Ready For Adventure. One of the most beautiful Waterfall in Maharashtra.

11:00 AM Descend & move towards base village

- Return Back to Patnus
- What makes Devkund Waterfall trek even better is its trail in dense jungle.



Day 1



01:00 PM Reach base village and have Lunch

- Lunch and Rest
- Have a Delicious Lunch & Take A Rest & Then We Will Start Our Return Journey to Shivajinagar

03:00 PM Lunch & Start Return Journey

- Lunch and Rest
- Have a Delicious Lunch & Take A Rest & Then We Will Start Our Return Journey to Shivajinagar

10:00 PM Back to Pune/Mumbai

- End Of A Beautiful Journey.
- And a Farewell to all beautiful souls with unforgettable memories



INCLUSION

- Transport To & Fro From Pune/Mumbai
- Breakfast (1x)
- Veg Lunch (1x)
- Trek Leader expertise charges
- Games & Much More
- Basic First Aid

EXCLUSION

- Mineral water/lime water/ purchased
- for personal consumption
- All kinds of Extra Meals / soft drinks ordered
- Any kind of personal expenses. Any kind of cost which is not mentioned in the cost includes above.
- All expenses incurred due to unforeseen and unavoidable circumstances like roadblocks, bad weather
- Any medical / Emergency evacuations if required.
- ₹ 100 Charges for Forest Permit
- Extra charges Non-veg

AVAILABLE DATES

Months	Dates (Friday Pickup)
August	05, 12, 19, 26
September	02, 09, 16, 23

Months	Dates (Saturday Pickup)
August	06, 13, 20, 27
September	03, 10, 17, 24

Months	Dates (Monday Pickup)
August	14th-15th

PACKAGES

DEVKUND WATERFALL TREK

PUNE - PUNE (INC 5% GST)

INR 1,733/-

Per Person

DEVKUND WATERFALL TREK

MUMBAI - MUMBAI (INC 5% GST)

INR 1,733/-

Per Person

NOTE:- Extra ₹100 Forest Permit Charges

FOR ANY QUERIES & BOOKINGS :  +91 8800-144-436



PAYMENT DETAILS

UPI ID	astrekkersofindiaprivatelimited.ibz1@ICICI
Account Holder	AS TREKKERS OF INDIA PRIVATE LIMITED
Account Number	107005013204
IFSC	ICIC0001070
Account Type	CURRENT

OR YOU CAN SCAN QR CODE

UPI
UNIFIED PAYMENTS INTERFACE

Accepted Here

ICICI Bank
Business Banking

BHIM
BHARAT HITA KAMAL

podets
BY ICICI Bank



Merchant Name AS TREKKERS OF INDIA
Mobile Number PRIVATE L

SCAN TO PAY



CANCELLATION POLICY

- **Cancellation Charges**

- **Upto 21 Days** - 20% Deducted
- **21-15 Days** - 40% Deducted
- **14-8 Days** - 60% Deducted
- **7-0 Days** - No Refund

- **GST is non Refundable**

- **Refund will be done in mode of Credit Note with Lifetime Validity.**

- **No cash refund will be done.**





TREK ESSENTIALS

BASIC GEARS

Backpack & Rain cover

- (40 - 60 ltr) with comfortable shoulder straps.

Day pack + rain cover

- 20-30 ltr (If hire a mule or porter)

Water bottle/Hydration pack

- 2 bottles of one liter each, People who use hydration pack, 1 hydration pack and 1 bottle of one liter, Carry at least one thermos flask.

Personal Medical Kit

- Consult your doctor

Snacks

- Energy bars, Dry fruits, Electrol/ors

PERSONAL UTILITIES

Sunscreen cream

- Moisturiser

Hand sanitizer

- Antibacterial powder

Toothbrush & toothpaste

- Lip balm / Chapstick

Toilet paper & Wipes

- Quick dry towel

FOOT GEARS

Trekking Shoes

- 1 pair (Waterproof, high ankle with good grip)

Floater/flip flops

- 1 Pair



HEAD GEARS

Sunglasses

- Dark with side cover, it should be U/V protected, People who wear spectacles-
 - (a) Use contact lenses.
 - (b) Photo chromatic glasses.

CLOTHES

T-Shirts

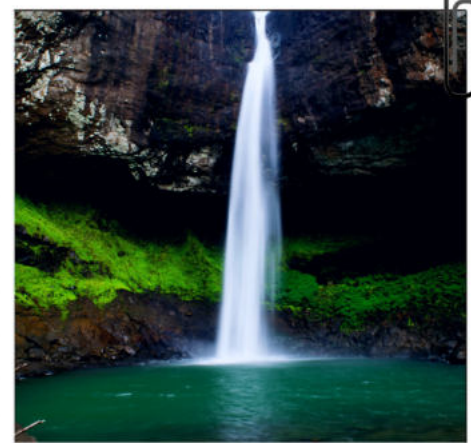
Poncho (Mandatory)

- 2 Full sleeves (Non-cotton)
- 1 Nos.

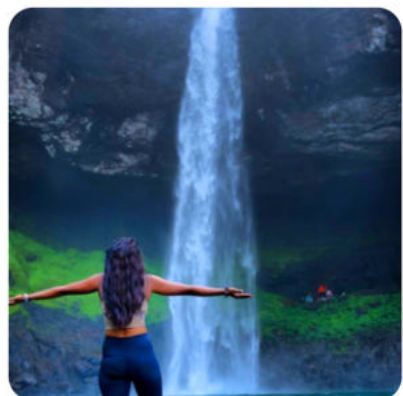
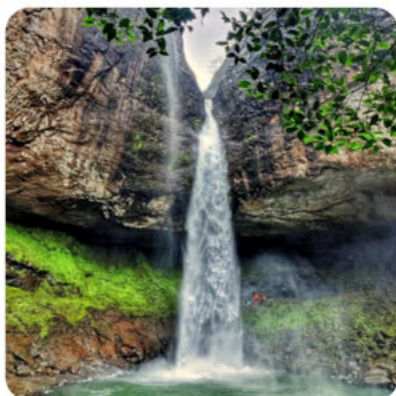
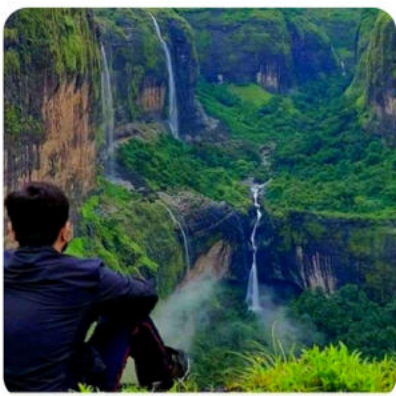
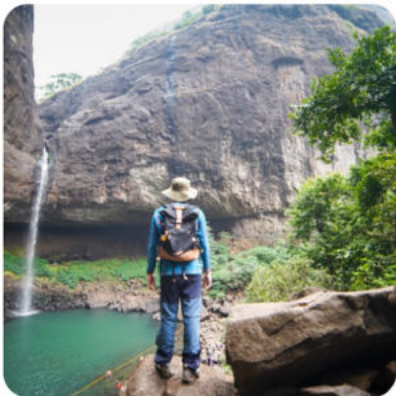
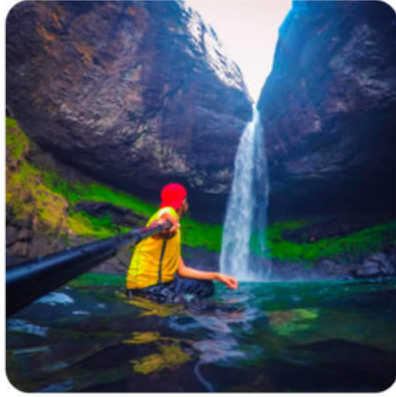
WHY YOU SHOULD BOOK WITH



- **DIRECT OPERATING TREKKING/TRIP COMPANY**
- 5 star trek/trip experience
- Organising treks for more than 20,000+ travelers every year
- Professional team & fun loving trek/trip leaders, guides
- High quality tents, sleeping bags & other equipments
- Comfortable stays at base camps
- Trek/Trip with millennials
- Suitable for solo, group of friends & couples
- Certificate & trek/trip badge
- **Safe for Solo Women Travellers**
- Delicious & hygienic meals throughout the trek/trip
- Like minded co-travellers



FOR ANY QUERIES & BOOKINGS :  +91 8800-144-436



EVERY YEAR 20,000+ TRAVELLERS JOIN US
BE A PART OF MAHARASHTRA'S BIGGEST & SAFEST TREKKING ORGANISATION

BOOK NOW

+91 8800-144-436